



# Newsletter 30th June 2023

## Kettering Park Infant Academy

---

*We have had a great start to the last term for this academic year, the children have returned to school with a positive attitude to learning and have made a great start already!! We have lots of things to look forward to this term for each year group so keep a look out on Class Dojo, social media and Arbor for information about these dates.*

*Please continue to read at home with your child daily and ensure that they are using Maths Whizz as this really will support their learning, any questions please see your child's class teacher. Can I please remind you to ensure that before and after school your child / children must remain with you and not play within the playground - thank you for your support with this. Have a lovely weekend and thank you for your ongoing support.*

## Sun Safety

---

*As the weather is getting warmer can you please ensure that children bring a sun hat to school every day and that sun cream is applied at home before they come to school. Children can reapply sun cream during the day but staff are unable to help them with this.*

---

## Attendance

---

*Please see the attendance records so far:*

*Class 1 - 96.4%*

*Class 2 - 98.3%*

*Class 3 - 97.7%*

*Class 4 - 94.5%*

*Class 5 - 93.4%*

*Class 6 - 91.3%*

*Class 7 - 94.6%*

*Class 8 - 93.6%*

*Class 9 -92.1%*

*Rainbow Room -91.6%*

*Whole School Attendance - 90%*

*If your child is not going to be in school please make sure you contact the school office as early as possible in the morning. Our office opens at 8:15am and there is the option to leave a message as well. If we do not hear from you we may carry out a home visit, safety of our children is incredibly important to us as a school. Many thanks for your support and understanding with this.*

---

## Parking

Please remember:

- No parking on double yellow lines
- No stopping/dropping off on the zig zags
- No parking on corners or junctions
- Please do not block driveways

By following these simple guidelines we can all work together to create a safe and respectful environment outside of the school. Let's continue to be responsible and considerate at drop off and collection times, for the safety of our children and other drivers.

## Late Collection

---

*We are finding that there are more and more children being collected late on a dail/regular basis, whilst we understand that there may be the odd occasion due to unforeseen circumstances that you collect your child late this must not be an everyday/regular occurrence. Collection times for our Reception children is between 3:10pm and 3:20pm, collection for our children in Year 1 and 2 is between 3:00pm and 3:10pm.*

*I appreciate your support with this, it is important that you adhere to the school times as set out. If you have any problems with these time them, please speak to Mrs. Powell or Mrs. Pearce who will be able to support you with this.*

---

## Uniform

---

*Please ensure that all your child's uniform is **labelled clearly** to avoid items being lost/taken by mistake. Hair must be tied up every day for school.*

*Please be advised that the correct uniform for school is as follows:*

---

- 
- *White collared polo shirt*
  - *Grey or black trousers/skirt/dress*
  - *Royal blue cardigan/sweatshirt*
  - *Black shoes – no trainers*
- 

---

*Please can we be reminded that jewellery such as rings and necklaces are not to be worn to school. Only stud earrings are allowed, these must also be taken out on PE days, otherwise your child will not be able to join in for PE.*

*If your child rides a bike/scooter to school please ensure they wear a helmet.*

---

## Maths whizz

Please continue to use Math's Whizz at home, Math's Whizz is a brilliant online tool. It provides interactive lessons, assessments and games that makes math fun and engaging.

Children can practice at their own pace, receive feedback/support from their teach

er and track their progress. This helps pupils have the best chance of succeeding in math.

Children will also receive certificates and Dojo points for their achievements on Maths Whizz.

If you need your child's login details please contact the office.

## Reading

Please continue to read at home with your child. Daily reading in order to build confidence and fluency really will support your child with all aspects of their learning. Please see your child's teacher if you have any further questions.

## KW foundation

---

*As a school we have been able to purchase some new bikes and scooters for the children to use. We recently received a donation of 10 helmets, knee and elbow pads from the KW foundation who do amazing work to support local clubs, charities, schools and individuals.*

*The children are now able to use the bikes and scooters and have had lots of fun doing so. The children in Reception are using these as part of their learning and children in KS1 will be able to use these at lunchtimes.*

---







## Book Fair

---

*The Usborne Book Fair was a great success meaning our school will receive £100 worth of free books for our library!*

*A big thank you to everyone who attended.*

---



## Upcoming Dates

---

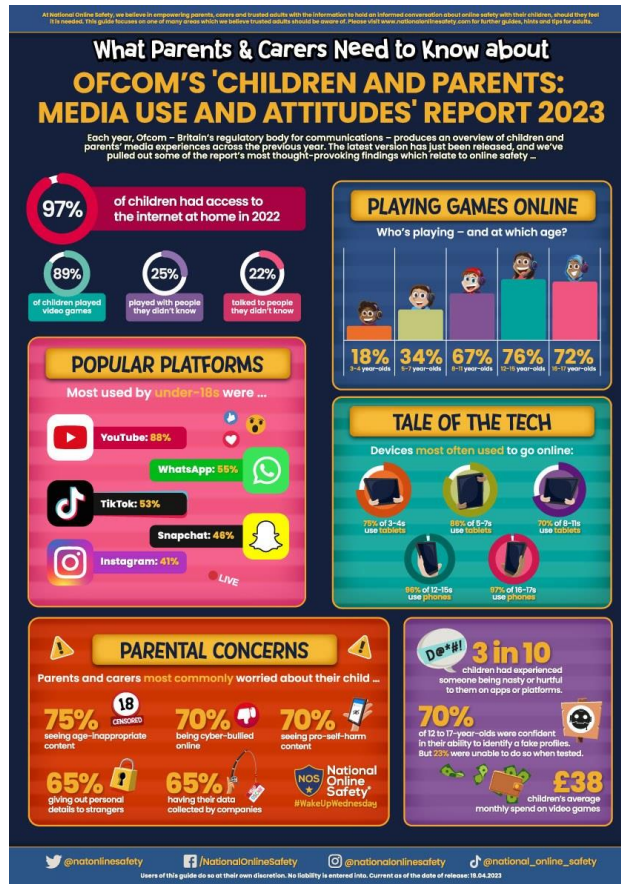
---

---

- *Monday 19th June 2023 - New parent meetings*
- *Tuesday 20th and 21st June - Life Education visit to school*

- *Friday 23rd June 2023 - Year 1 Seaside Day in school*
  - *Tuesday 27th June 2023 - Music Day in school*
  - *Thursday 29th June 2023 - Sports Day*
  - *Tuesday 4th July - Year 2 Trip to Shepreth*
  - *Monday 10th July 2023 - Transition Day - children will visit their new class for the day - more information to follow closer to the time*
  - *Wednesday 12th July - Celebrating Reception 2:20pm - 2:50pm*
  - *Friday 14th July 2023 - Reports out*
  - *Monday 17th July 2023 - Opportunity for parents to discuss their child's report with teachers after school*
  - *Wednesday 19th July 2023 - Year 2 Leavers Service at Carey Baptist Church at 10:30am*
  - *Friday 21st July 2023 - End of the year*
-

# Online Safety



Disney+ is the latest big player in the TV streaming market. The global brand has released its own subscription-based streaming service to rival that of competitors such as Netflix, Amazon Prime and Apple TV. As the name might suggest, it's designed to be family friendly, with content restricted to PG and PG-13 (UK equivalent 12a). It can be streamed on pretty much any device – mobile phones, tablets, PCs, TVs and games consoles – and features a huge library of classic Disney titles. Below, we've highlighted a few tips for parents to consider to ensure that their children get the most enjoyable experience out of the service.

## 5 TOP TIPS FOR PARENTS

# DISNEY+

### 1 Create a strong username & password

On its release in the US, Canada and Netherlands in November 2019, Disney+ was plagued by thousands of items hacked. Many users complained that their account details had been stolen and leaked online. To date, Disney+ has confirmed there was no data breach from their end. As Disney+ doesn't use 2-factor authentication, anybody who potentially hacks your username and password could also access your credit card details. Therefore, it's important to create a unique username and a strong password that isn't used for other sites. Always use a mixture of letters (upper and lowercase), numbers and symbols and try to ensure the minimum length is 8 characters.

### 2 Monitor your child's usage

Whilst the ability to stream on almost any device capable of connecting to the internet might seem great at first, parents may also want to exercise a little bit of caution. Parental controls on Disney+ are quite limited and there are no settings to help with screen time or usage, so it can be easy for children to binge-watch, particularly given the amount of content available. Apple, Google and Amazon devices all provide options to limit children's screen time so parents can manage how long their child uses the app.

### 3 Enable 'Kid's Profile' mode

Although Disney+ is billed as family friendly, there is still an option to enable a 'Kid's profile' which removes all PG and PG-13 rated content. This adds an extra level of safety if you're still concerned that your child may watch something that could be deemed too intense for their age. Setting up a Kid's profile also switches off autoplay which means the next video in any series won't automatically play once one episode has finished. It should be noted though that children can easily switch between accounts themselves given there is no security required to get into profiles.

### 4 Double check for films with outdated cultural depictions

The Disney+ service includes programs and movies that go back to the 1930s and which have been left in their original format, with their original content. Some of this programming contains cultural representation and depictions that were included in the original show, but Disney would never include them now. For example, cultural stereotyping, the representation of minority groups or character portrayals which may be deemed racist. For this reason, viewers are made aware through a warning message stating "This program is presented as originally created. It may contain outdated cultural depictions. Whilst Disney do their best to highlight any such content, it's always worth discussing these issues with your child if they raise any queries."

### 5 Sit back and enjoy!

Above all else, Disney+ is designed to be family friendly and there is very little, if any, adult-themed content available for children to stumble across. The library of films and programmes can range from all-time classics to the latest Hollywood blockbuster and it can be a great avenue for parents and children to sit back together, enjoy the popcorn and enjoy some great family friendly entertainment.

### Meet our expert

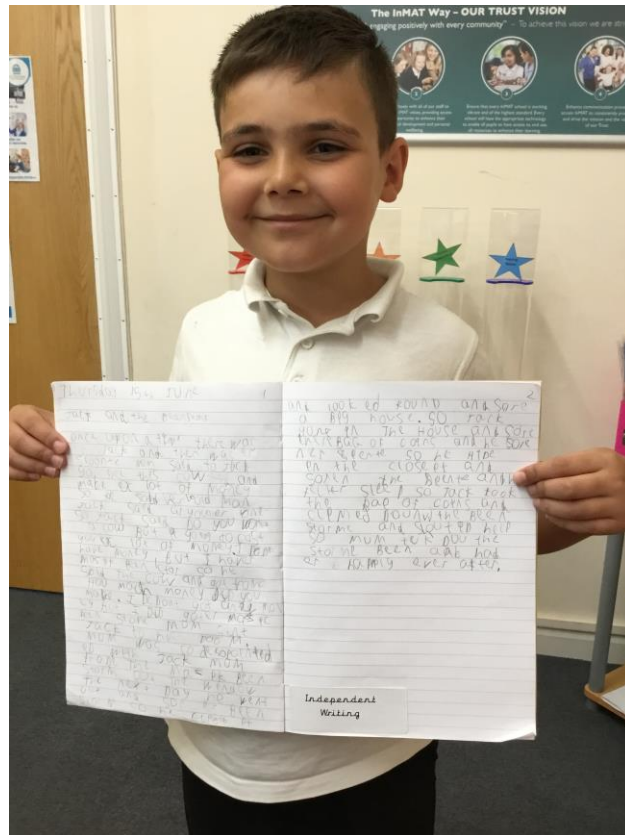
Pete Beale is a writer with over 10 years in research and analysis. Working within a specialist area for West Yorkshire Police, Pete has contributed work which has been proved to successfully remove high profile cases in court as well as writing as a subject matter expert for industry briefings.

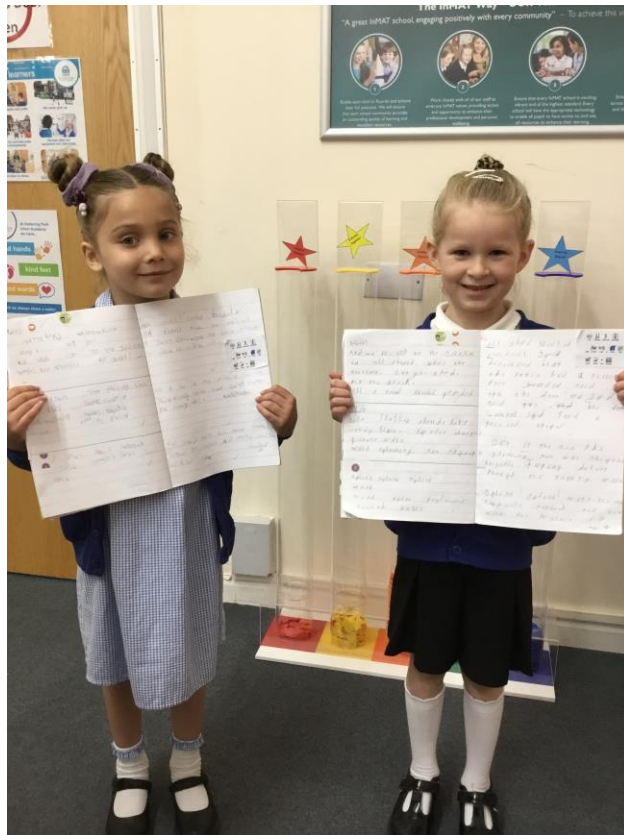
**National Online Safety**  
#WakeUpWednesday

[www.nationalonlinesafety.com](https://www.nationalonlinesafety.com)   Twitter: @nationalonlinesafety   Facebook: /NationalOnlineSafety   Instagram: @NationalOnlineSafety

Users of this guide do so at their own discretion. No liability is entered into. Current as of the date of release: 17.04.2020

## Gallery





9.6.23

And we're off to the seven seas,  
 all aboard, where the treasure lies.  
 Let's go aboard, Mr. the shark,  
 all a board should get on board.

Fluffy clouds like  
 by glass. Softies chattering  
 at WVS  
 splashing sun sky high

ash splash

shot

u b b l

g u g l / Excellent!

15

