

Park Infant Academy

Autumn 1 Newsletter

It has been a pleasure to welcome all our families back to school for our new term and the academic year. The children have all made an excellent start to the term and have shown a positive attitude and approach to learning already—well done to you all. Welcome to our new Reception children and families, I have been so impressed with how well the children have settled into our school. As a school we have focused again on our school values, behaviour expectations and what a responsible learner looks like. Please see later in the newsletter for reminders of these that you can share at home with your child/ren. The staff have worked hard over the summer to ensure that the classrooms were ready for the children on their first day, they are vibrant learning environments to support the children in their learning—my thanks to the staff for their hard work. I am sure you have noticed the bright new playground markings which have really made our playground look so fantastic, the children have already enjoyed using the trails and I know they will continue to be used over the year—my thanks to Miss Berwick for organising this for our school. I am really looking forward to our year at school with the many activities that we have planned. We are looking forward to school trips, visitors into school and workshops that our families can attend. Please do come and speak to me if you have any questions or concerns. Thank you for your continued support to our school. Have a lovely weekend.

Mrs Powell.

Hello everyone, my name is Tina Pearce and I am the Family Support Worker at both Kettering Park Infant and Junior Academy. I am available to help you with any worries in your life be it housing, financial or family related to name just a few and hopefully signpost you to agencies that will be able to help you, supporting you along the way if you would like.



My theory is that a happy home life makes a happy child.



Hello, my name is Joanne Swift and I am the Behaviour Lead and Well Being Mentor. At the Infant Academy I work with all year groups supporting children's well being and mental health. I also support staff with pupils who need extra classroom support.

If you have any concerns or need help, advice or support regarding your child, please do not hesitate to contact me or pop into the office.

ARBOR Please make sure that you have filled in all vital information on the Arbor app. This is important and will keep our records up-to-date.

1. Contact details for all adults collecting your child.
2. Any medical conditions including allergies.
3. Ethnicity
4. If you do **NOT** wish your child to be photographed for social media.

HEALTHY EATING - At Kettering Park Infant Academy we always promote healthy eating. We do not allow chocolate, sweets or fizzy drinks. We also have children in school who are allergic to nuts and so do not allow any products that contain nuts which include chocolate spread and cereal bars.

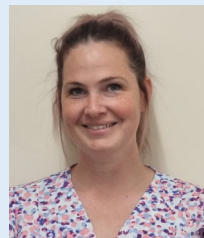
**Safeguarding is
everyone's
responsibility**

Safeguarding is everyone's responsibility. Here at Kettering Park Infant Academy all members of staff have received safeguarding training. If you have any concerns about safeguarding, please speak to one of our school's designated leads for safeguarding: Mrs Powell, Mrs Dickens or Miss Pearce.

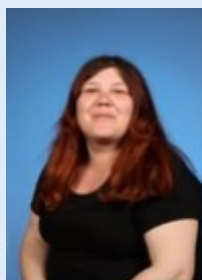
Alternatively, if your matter is urgent or outside of school hours, please contact the MASH team on 0300 126 7000.

We would like to introduce to you our newest members of staff.

Miss Lee is our new Class 6 teacher and Assistant Head Teacher. Miss Lee has been joined by Miss Corcoran who is Class 6's new Teaching Assistant.



Miss Molloy is our new Class 7 teacher and we also have Miss Rowe who is our teaching assistant in Class 1.



UNIFORM AND PE DAYS

Uniform at KPIA is as follows:

White polo shirt, Grey trousers or skirts, Royal blue cardigans or sweatshirts with white or grey socks and black leather shoes. PE kit should consist of a plain white t-shirt and tracksuit bottoms and PE trainers or black pumps. PE kit will remain in school until the end of the term and can then be collected to be washed. Earrings should be removed before coming to school as the children will not be able to take part in PE with earrings in.

Please could children with long hair tie it up as much as possible so that it doesn't distract them from working. Thank you for your support so far this term in ensuring the children have correct uniform.

JUNIOR SCHOOL Applications for your child's Junior School place are now open and will be until 15th January 2023. An information letter was sent out yesterday by Mrs. Lindsay in our school office, please call the office if you have not seen a copy of this. Please note that you can apply online by going to the County council website. Any queries, please contact the council.

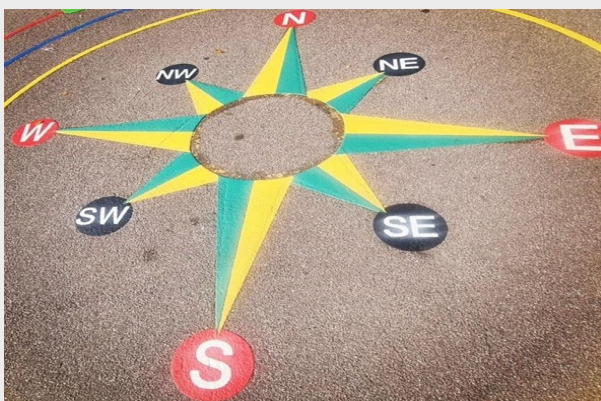
EARLY YEARS PLAY AREA

For safety reasons, please could we ask that children do NOT play with the equipment in the Reception class play area before or after school times.

CLASSDOJO ClassDojo is used as a brilliant tool that we use in school. It enables us to pass on information to you and to let you know what your child is doing during the school week and for parents and vice versa. Please be advised that you do NOT need to pay for an upgraded version of ClassDojo. The free version is all that is required.

SCHOOL PLAYGROUND

We have been back to school for two weeks and the children have been enjoying our bright, fun and newly decorated playground.



SCHOOL ATTENDANCE

Arriving at school on time every school day is crucial. Our children start their morning with phonics which is incredibly important so being at school on time supports their development further. Being on time means that your child is settled in class and ready to begin learning. Children must be brought into school by an adult or sibling who is of secondary school age. You can always keep up-to-date with your child's attendance via the Arbor app.

The attendance target for every child is at least 97%.

Whole School Attendance: 97.6%

Rainbow Room: 99.3%	Class 1: 99.8%	Class 2: 98.4%	Class 3: 99.2%	Class 4: 96.1%
Class 5: 94.3%	Class 6: 96.5%	Class 7: 98.1%	Class 8: 96.9%	Class 9: 94.1 %

The Attendance newsletter has been sent for all families to read.

Children in Reception need to be in school by 9am and children in Years 1 & 2 by 8.50am. We will be sending out weekly emails to those parents who's children are late and monthly emails for those who are persistently absent. Please be aware that this is a government requirement but if you have any queries you can contact the office.

DATES TO REMEMBER

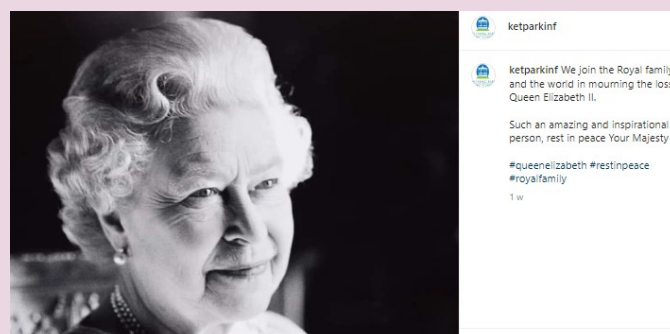
Friday 23rd September	Jeans for Genes Day
Thursday 29th September	School Photographs
Friday 7th October	Family Reading begins
Monday 17th October	Year 2 Trip to Wicksteed Park
Tuesday 18th October	Harvest Festival—more information to follow
Friday 21st October	Close for half term

KPIA SOCIAL MEDIA

Follow us on social media.

We are on Twitter and Instagram: @Ketparkinf

We also have our school website.



Core Vision, Values and Behaviour expectations.

At Kettering Park Infant Academy we continually promote our visions and values and behavior expectations.

Integrity	"Honesty"
Inclusion	"Together"
Involvement	"Teamwork"
Initiative	"Independence"
Inspiring	"Believe"



The Values collector has children regularly visiting to drop their tokens into the collector. It has been a great incentive for our children, who work hard to enable them to receive a token from their teacher. They are always very proud to receive them and to tell others why.



Independence ★	Honesty ★	Believe ★	Teamwork ★	Together ★
Initiative ★	Integrity ★	Inspiring ★	Involvement ★	Inclusion ★

We are responsible learners



We always try our best.



We are respectful and polite.



We never give up.



We sit on the carpet and on a chair correctly.



We have fun and take pride in our achievements.



We look after our equipment and resources.



We wear the correct uniform.



We listen to others.



Kind Proud Independent Achieve